



॥ राष्ट्रदेवो भवः ॥



Since 1994

SELF PRIMING

**NANO - 55**

**Nano**  
Series



Bath Shower



Gardening



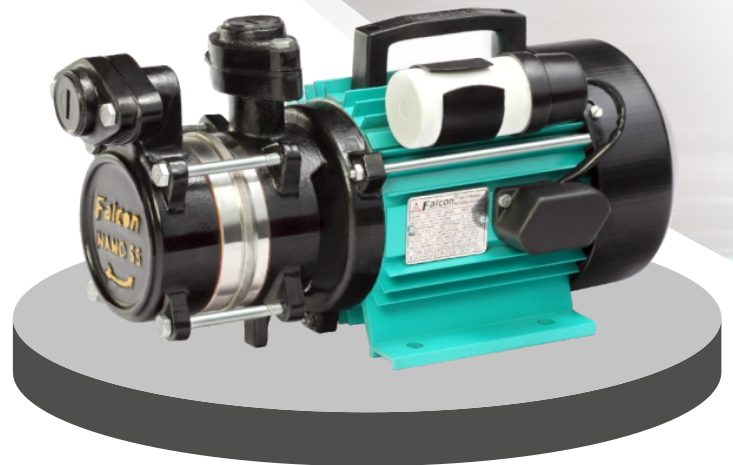
Domestic



Water Supply



Industrial



Mfg. by: **Falcon Pumps Pvt. Ltd.**

Chale Pragati Ki Aur®

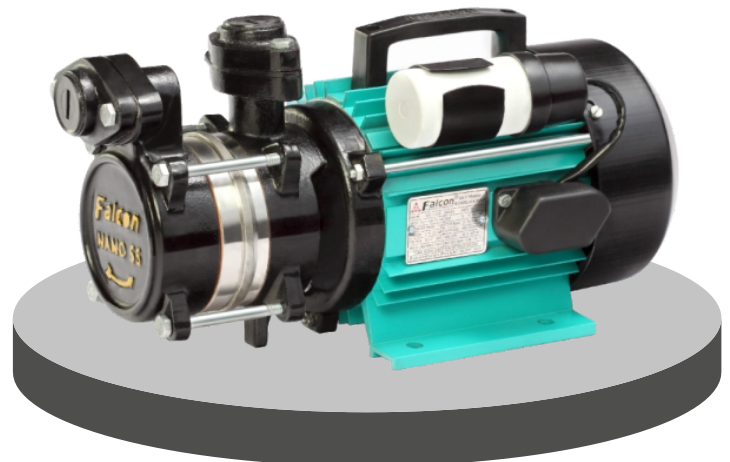
✉ [sales@falconpumps.in](mailto:sales@falconpumps.in) | ✉ [info@falconpumps.in](mailto:info@falconpumps.in) | ☎ 1800 123 0000

## ■ SELF PRIMING SERIES

Falcon regenerative monoset pumpsets are powered by a totally enclosed fan cooled AC induction two pole motor. Motor stator is made of low watt loss silicon steel laminations assembled under pressure and rigidly locked in the frame. The windings are of high-grade enameled copper wire offer excellent resistance and are varnish impregnated. Construction of motor frame and usage of quality materials result in high performance and low temperature rise thereby increasing the life cycle of the motor.

## ■ SALIENT FEATURES

- High operating efficiency resulting in lower power consumption
- Good suction lift characteristics
- Inbuilt thermal overload protector in all single phase pumpsets
- Specially designed for wide voltage operation
- Dynamically balanced rotating parts including rotor and impeller ensures minimum vibration and longer life
- Back pull-out design for easy servicing and repair
- Double shielded ball bearings, so no need of external lubrication
- Mechanical seal is provided as per customers requirement.

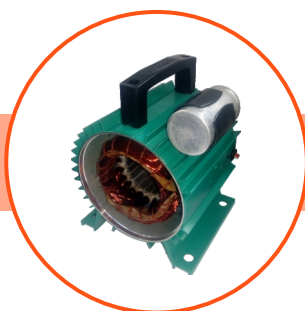


## **SPECIFICATION**

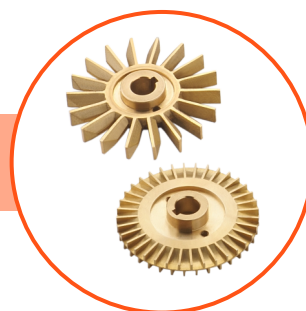
- Power Range	: 0.37Kw (0.5 HP)
- Version	: Single Phase, 200-240V, 50Hz AC Supply
- Speed	: 2880 RPM
- Maximum Total Head	: 30 Mtr.
- Maximum Flow Rate	: 1730 LPH
- Maximum Suction Lift	: 7.5 Mtr.
- Degree of Protection	: IP 44
- Class of Insulation	: B
- Maximum Ambient Tem.	: 40°C
- Sealing	: Mechanical Seal
- Type of Duty	: S1 (Continuous)
- Direction of Rotation	: Single Phase, Clockwise from driving end
- Nominal Pumpset Size (Suction X Delivery in inch)	: 0.5" X 0.5"



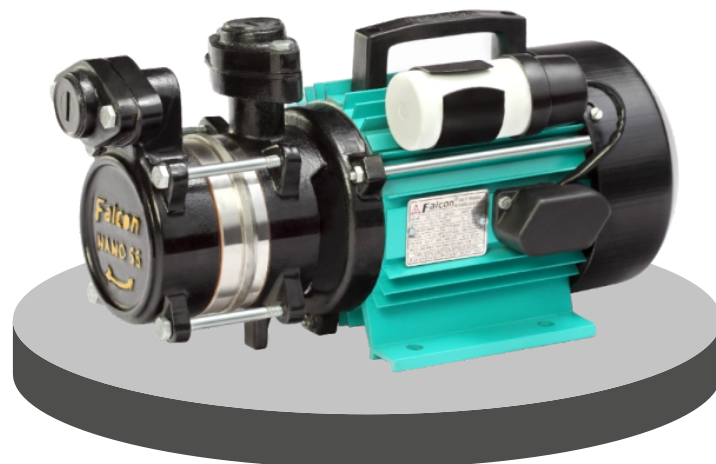
**Thermal  
Overload Protector**



**Aluminum Body**



**Brass Impeller**



## ■ CHARACTERISTICS OF CLEAR COLD WATER

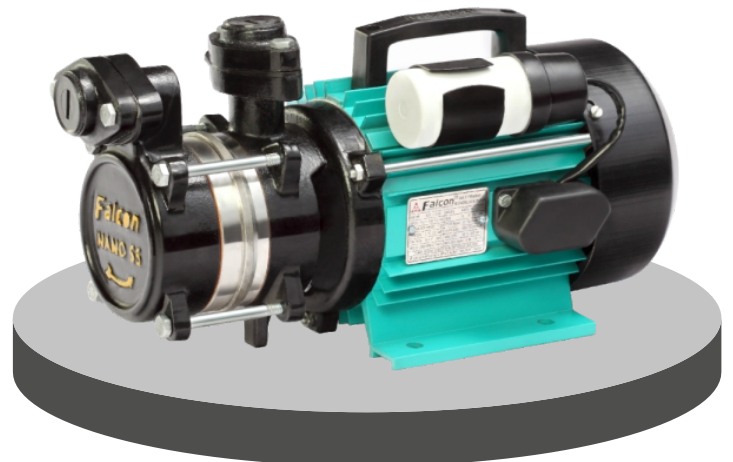
- Maximum liquid temperature : 33°C max
- Permissible amount of sand : 25 g/m<sup>3</sup>
- Allowable solids : 3000 ppm (max.)
- Chloride ion density : 500 ppm (max.)
- Turbidity : 50 ppm silica scale (max.)
- Hardness (Drinking Water) : 300 ppm (max.)
- Specific gravity : 1.004 (max.)
- Viscosity :  $1.75 \times 10^6$  m<sup>2</sup>/sec (max.)
- Ph Value : 6.5 to 8.5



**CRNGO  
Progressive Cutting  
Stamping Stack**



**High Tech  
Mechanical Seal**





## ■ MATERIAL OF CONSTRUCTION - MOTOR

<u>Part Name</u>	<u>Material</u>
Mechanical Seal	: Carbon & Ceramic
Motor Shaft	: SS-410
Motor Body	: Aluminium
Bearing	: SKF
End Cover	: FG-260
Bracket	: FG-260
Flange	: FG-260
Casing	: FG-260
Impeller	: Brass
Cooling Fan	: Plastic
Cooling Set	: SS-304

